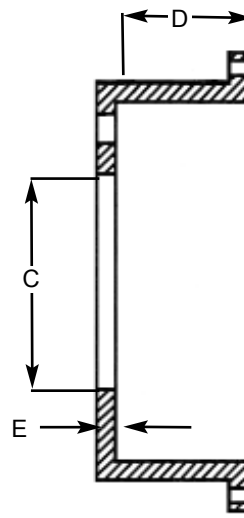
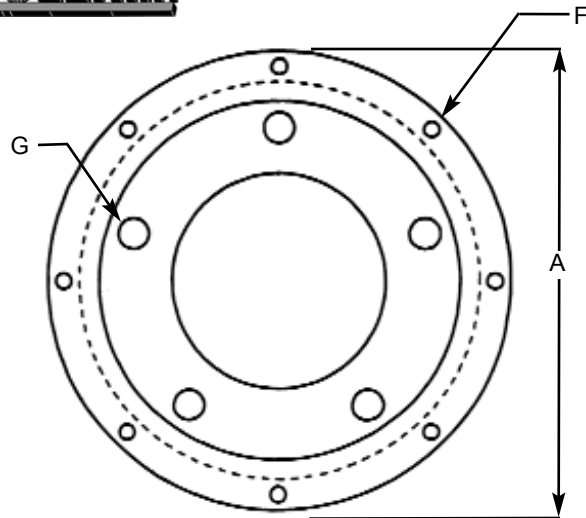




## CUSTOM ROTOR HAT SPEC SHEET



### SIZES NEEDED FOR CUSTOM HATS

A= \_\_\_\_\_ Maximum Outside  
 B= \_\_\_\_\_ Minimum Diameter  
 C= \_\_\_\_\_ Center Bore  
 D= \_\_\_\_\_ Actual Offset  
 E= \_\_\_\_\_ Face Thickness  
 F= \_\_\_\_\_ Number Of Holes  
 F= \_\_\_\_\_ Size Of Holes  
 F= \_\_\_\_\_ Bolt Circle Center  
 G= \_\_\_\_\_ Number Of Holes  
 G= \_\_\_\_\_ Size Of Holes  
 G= \_\_\_\_\_ Bolt Circle Center

Approved By: \_\_\_\_\_ Date: \_\_\_\_\_

These custom rotor hats are machined to your specifications. When measuring for custom hats please be as accurate as possible with your dimensions and also provide tolerances for each dimension. If you can not supply Coleman with sizes you may send us a sample and we will draw a blueprint from the sample and send it to you for your approval. We can not make custom hats with sizes supplied over the phone. All custom hat sheets must be signed and dated by the purchaser or person supplying the sizes. Coleman Machine, Inc. is not responsible for any failure of custom hats due to improper fit, improper tolerances or any problems encountered with the sizes or design of the finished part when machined to customers specifications.



## T-LOCK FLOATING ROTOR MOUNT

These T-lock floating rotor mounts fit all standard floating rotors with .500" wide slots and .200 thick flanges with 1/4" mounting holes. Sold 12 pieces per set.



PART NO.	DESCRIPTION	RACER
CL-690	T-Lock, Floating Rotor Mount.....(12 pcs.)....\$	



## DRIVE BOBBINS



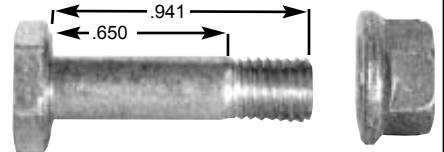
These steel drive bobbins fit all common slotted style floating rotors. They are available in three lengths and are sold in kits of 10 pieces and 12 pieces which include drive bobbins, screws and heavy duty washers.

PART NO.	DESCRIPTION	RACER
21120	Drive Bobbin Kit, .420 Long, 10 Pieces.....\$	
21121	Drive Bobbin Kit, .420 Long, 12 Pieces.....	
21122	Drive Bobbin Kit, .480 Long, 10 Pieces.....	
21123	Drive Bobbin Kit, .480 Long, 12 Pieces.....	
21124	Drive Bobbin Kit, .638 Long, 10 Pieces.....	
21125	Drive Bobbin Kit, .638 Long, 12 Pieces.....	



## COLEMAN BOLT AND LOCK NUT, NAS

These 1/4-28 hex head aircraft quality shear bolts have a 160,000 to 180,000 tensile strength with a minimum 95,000 PSI shear. The 1/4-28 lock nut has a 160,000 PSI tensile strength. These nuts are also referred to as jet nuts or kaynuts.



PART NO.	DESCRIPTION	RACER
17495	Bolt, 1/4"-28 NAS.....\$	
16199	Nut, 1/4"-28 Lock Nut.....	



## BOLTS AND NUTS, ROTOR MOUNTING



PART NO.	DESCRIPTION	RACER
BR-630	Rotor Bolt, 1/4-20 Button Head.....\$	
14453	Rotor Bolt, 1/4-28 x 7/8", SHCS.....	
BR-631	Rotor Bolt, 5/16-18 x 7/8", SHCS, Wide-5.....	
BR-632	Rotor Bolt, 5/16-24 x 7/8", SHCS, GN Hats.....	
BR-633	Lock Nut, 5/16-24, GN Hats.....	



## BOLTS, ROTOR MOUNTING, SAFETY WIRE DRILLED



PART NO.	DESCRIPTION	RACER
630-100	Rotor Bolt, 1/4-28 x 1 1/2" Long.....\$	
631-100	Rotor Bolt, 1/4-20 x 1" Long.....	
632-100	Rotor Bolt, 5/16-24 x 7/8" Long.....	