


# Instrument Panel, Gauges and Warning Indicators: Service and Repair








## INSTRUMENT PANEL

### SPECIAL TOOL

Tool	Tool number and name	Supersession	Application
	MB990784 Ornament remover	General Service tool	Removal of switch, trim, etc.

## INSTRUMENT PANEL

For installation of the instrument panel, the bolts and screws described below are used. They are indicated by symbols in the illustration.

Name	Symbol	Size mm (in.) (D × L)	Color	Shape
Tapping screw	A	5 × 16 (.20 × .62)	—	
	B	5 × 12 (.20 × .47)	—	
	C	5 × 16 (.20 × .62)	—	
	D	5 × 16 (.20 × .62)	Black	
	E	5 × 20 (.20 × .79)	Black	
Washer assembled screw	F	5 × 16 (.20 × .62)	—	
	G	5 × 16 (.20 × .62)	Black	
Washer assembled bolt	H	6 × 16 (.24 × .62)	—	
	I	6 × 16 (.24 × .62)	Black	
	J	6 × 20 (.24 × .79)	—	
	K	6 × 20 (.24 × .79)	—	
	L	6 × 25 (.24 × .79)	Black	
	M	6 × 16 (.24 × .62)	—	

D = Thread diameter

L = Effective thread length

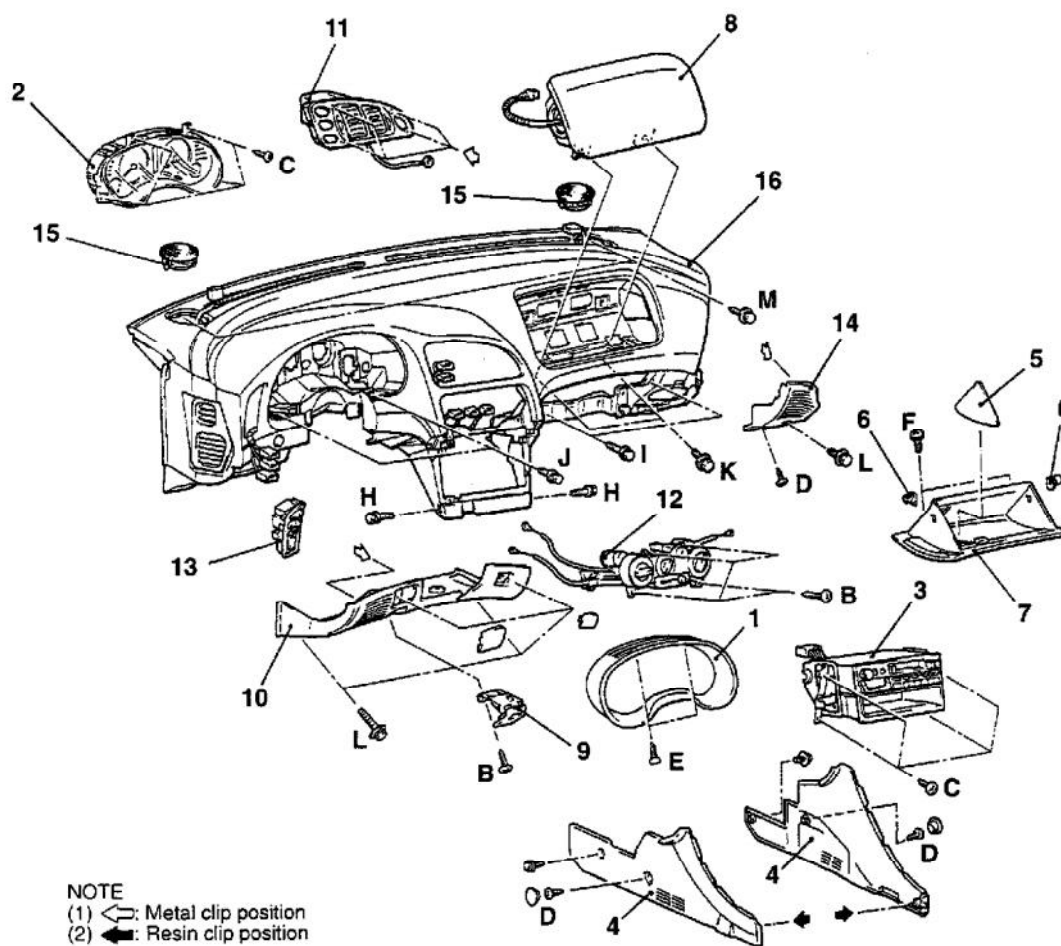
## REMOVAL AND INSTALLATION

### Pre-removal and Post-installation Operation

- (1) Floor Console Assembly Removal and Installation
- (2) Steering Wheel Removal and Installation (Refer to Steering Wheel and Shaft.
- (3) Steering Column Cover Removal and Installation Steering Wheel and Shaft.

### CAUTION: SRS

- (1) When removing and installing the floor console, do not let it bump against the SRS-ECU.
- (2) For the passenger's side air bag module removal / installation, always observe the service procedures for Air Bag Modules and Clock Spring.



### NOTE

- (1) Metal clip position
- (2) Resin clip position

### Removal steps

1. Meter bezel
2. Combination meter
3. Radio and tape player, and box
4. Console side cover
5. Sunglasses holder
6. Stopper
7. Glove box
8. Passenger's side air bag module assembly Refer to Air Bag Modules and Clock Spring.

9. Hood lock release handle
10. Instrument under cover L.H.
11. Center air outlet assembly
12. Heater control assembly
13. Instrument panel switch
14. Instrument under cover R.H.
15. Front speaker
16. Instrument panel assembly


◀A▶

▶B▶  
▶A▶

1. Disconnect battery ground cable.
2. Remove steering wheel as outlined in "Electrical" section of "Eclipse" chassis section.
3. Remove center console assembly as follows:

## FLOOR CONSOLE

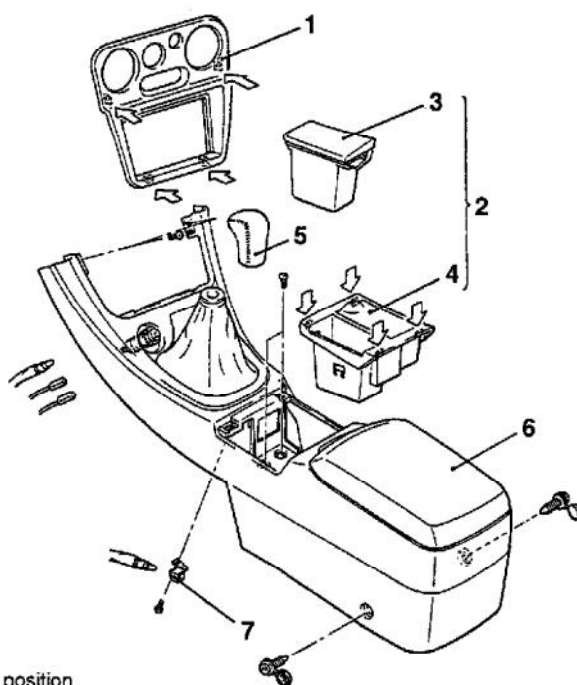
### SPECIAL TOOL

Tool	Tool number and name	Supersession	Application
	MB990784 Ornament remover	General service tool	Removal of panel, holder, etc.

## FLOOR CONSOLE

### REMOVAL AND INSTALLATION

**CAUTION: SRS**  
When removing and installing the floor console assembly, do not let it bump against the SRS-ECU.

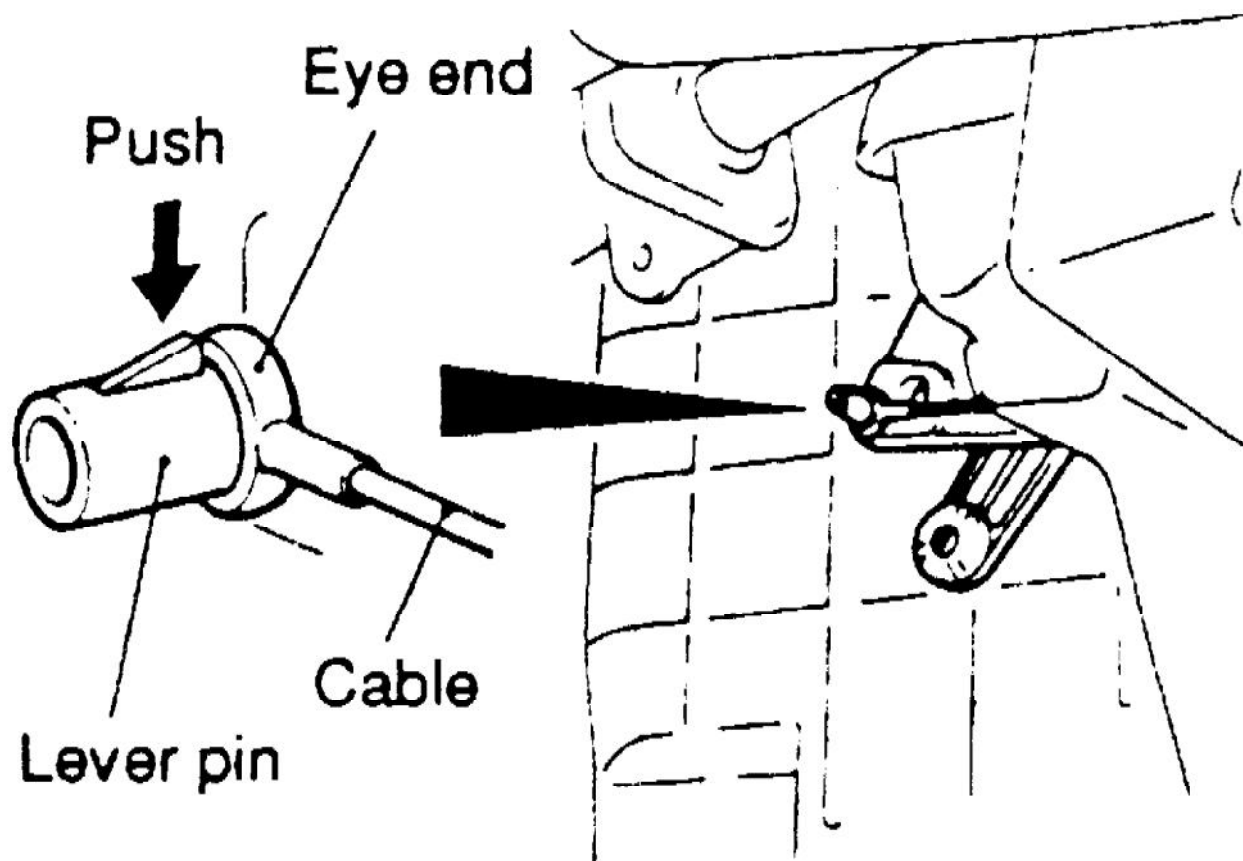


#### Removal steps

1. Center console panel
2. Ashtray and cupholder assembly
3. Ashtray
4. Cup holder

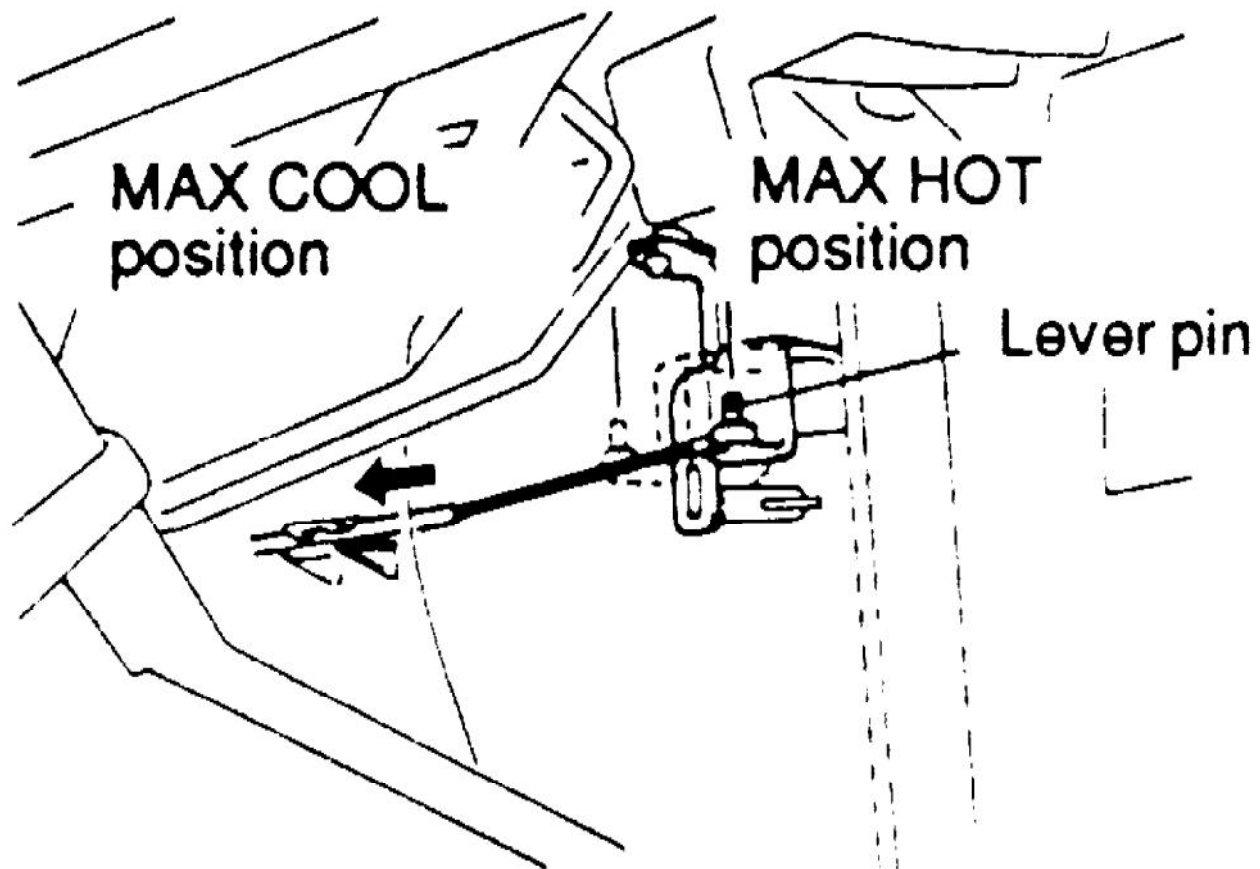
5. Shift lever knob <M/T>
6. Floor console assembly
7. Ashtray illumination light bracket

- a. Remove center console panel.
- b. Remove ashtray and cup holder assembly.
- c. **On models with manual transaxle**, remove shift knob.
- d. Remove center console assembly.
4. Remove combination meter bezel, then the combination meter.
5. Remove radio and tape player.
6. Remove console side cover and sunglasses holder. See: Dashboard / Instrument Panel/Air Bag(s) Arming and Disarming
7. Remove glove box and passenger air bag assembly.
8. Remove hood lock release handle, then the left-hand side instrument under cover.



**Fig. 16 Air Outlet Changeover Damper Cable**

9. Remove center outlet assembly by pushing lever pin to disconnect air outlet changeover damper cable, **Fig. 16**.
10. Remove heater control assembly.
11. Remove instrument panel switch and right-hand instrument under cover.
12. Remove speakers from top of instrument panel.
13. Remove instrument panel from vehicle.
14. Reverse procedure to install, noting the following:
  - a. Set temperature control knob on heater control assembly to "MAX HOT" position.



**Fig. 17 Heater Control Unit Installation**

- b. Set air mix damper lever at top of heater unit to "MAX HOT" position, then install cable to lever pin, **Fig. 17**.
- c. Push outer cable in direction of arrow as shown in **Fig. 17**, ensure there is no looseness in cable, then secure it with clip.
- d. Set knob for air outlet changeover on heater control assembly to the "DEF" position.
- e. Set air outlet changeover damper lever of heater unit to the "DEF" position, then install cable to lever pin, **Fig. 16**.