

FIG. ITEM	PART NUMBER	1234567	NOMENCLATURE	EFFECT FROM TO	UNITS PER ASSY
1 - 27	XW21181-18		. MOTOR ASSY-CONVERTER (SAME AS BAC SPEC DWG 10-61329-16) (RH ONLY) (V70255) (OPT XW21181-12, -16 (V70255)) (DELETED BY SL 30-2) (SEE FIG. 5 FOR DETAILS)	002002	RF
- 27	10-61329-22		. MOTOR ASSY-CONVERTER (SAME AS XW23629-2 (V70255)) (RH ONLY) (ADDED BY SL 30-2)	002002	1
- 27	XW23629-2		. MOTOR ASSY-CONVERTER (SAME AS BAC SPEC DWG 10-61329-22) (RH ONLY) (V70255) (ADDED BY SL 30-2) (SEE FIG. 5 FOR DETAILS)	002002	RF
- 30	NAS1303-5		. BOLT		3
- 35	AN960PD10		. WASHER		3
40	NAS517-3-5		. SCREW		2
45	AN960D10		. WASHER		2
50	BACN10R10		. NUT		2
55	63-1339		. PLATE-CONVERTER		2
55	63-1339-1		. PLATE-CONVERTER		1
65	63-1340-1		. GASKET		1
67	69-54232-1		. BOOT-RUBBER		1
70	69-56500-1		. BOX ASSY-M23 AND M24 RES. (SEE FIG. 41 FOR DETAILS)	003004	1
70	69-56500-3		. BOX ASSY-M23 AND M24 RES. (SEE FIG. 41 FOR DETAILS)	001002	1
- 75	NAS604-10		. SCREW		4
80	MS18029-155		. COVER ASSY		1
85	66-1365		. BRACKET ASSY		1
87	69-24259-3		. PLATE ASSY-SPT		1
- 92	MS20470B3		. RIVET		2
95	69-43994-1		. SUPPORT ASSY-(LH ONLY) (OPT 10 69-43994-12)		1
95	69-43994-8		. SUPPORT ASSY-(LH ONLY) (OPT 10 69-43994-12)		1
95	69-43994-2		. SUPPORT ASSY-(LH ONLY) (OPT 10 69-43994-12)		1
-100	69-43994-13		. SUPPORT ASSY-(RH ONLY) (OPT 10 69-43994-13)		1
-100	69-43994-9		. SUPPORT ASSY-(RH ONLY) (OPT 10 69-43994-13)		1
110	65-60326-5		. SHIM-LAMINATED		1
120	BAC540A12-93		. DOUBLER		1
125	69-43994-5		. RIVET		7
-130	BACR15CES		. ATTACHING PARTS		AR

MISSING ITEM NUMBERS ARE NOT APPLICABLE

ITEM NOT ILLUSTRATED

DETAILED PARTS LIST

HCA

FIG. 1

30-40-D

FIG. 1

30-40-00-01

FIG. ITEM	PART NUMBER	1234567	NOMENCLATURE	EFFECT FROM TO	UNITS PER ASSY
1	22	XW21181-11	. MOTOR ASSY-CONVERTER (SAME AS BAC SPEC DWG 10-61329-11) (LH ONLY) (V70255) (OPT TO XW21181-15, -17 (V70255)) (DELETED BY SL 30-2) (SEE FIG. 5 FOR DETAILS)	002002	RF
22	XW21181-17	. MOTOR ASSY-CONVERTER (SAME AS BAC SPEC DWG 10-61329-15) (LH ONLY) (V70255) (OPT TO XW21181-11, -15 (V70255)) (DELETED BY SL 30-2) (SEE FIG. 5 FOR DETAILS)	002002	RF	
22	10-61329-21	. MOTOR ASSY-CONVERTER (SAME AS XW23629-1 (V70255)) (LH ONLY) (DELETED BY SL 30-2) (ADDED BY SL 30-2)	002002	1	
22	XW23629-1	. MOTOR ASSY-CONVERTER (SAME AS BAC SPEC DWG 10-61329-21) (LH ONLY) (V70255) (ADDED BY SL 30-2) (SEE FIG. 5 FOR DETAILS)	002002	RF	
- 25	10-61329-2	. MOTOR ASSY-CONVERTER (SAME AS XW21181-2(V70255)) (RH ONLY)	004004	1	
- 25	10-61329-16	RPL BY 10-61329-12 RPL BY 10-61329-16 RPL BY 10-61329-22 (RH ONLY) (V70255) (OPT TO XW21181-16 AND -17)	001001	1	
- 25	10-61329-12	REPLS 10-61329-12 RPL BY 10-61329-2 RPL BY 10-61329-22 (RH ONLY) (V70255)	001001	1	
- 25	XW21181-16	. MOTOR ASSY-CONVERTER (SAME AS BAC SPEC DWG 10-61329-16) (RH ONLY) (V70255) (OPT TO XW21181-12, -18 (V70255)) (SEE FIG. 5 FOR DETAILS)	001001	RF	
- 25	XW21181-12	. MOTOR ASSY-CONVERTER (SAME AS BAC SPEC DWG 10-61329-12) (RH ONLY) (V70255) (OPT TO XW21181-16, -18 (V70255)) (SEE FIG. 5 FOR DETAILS)	001001	RF	
- 26	XW21181-2	. MOTOR ASSY-CONVERTER (SAME AS BAC SPEC DWG 10-61329-2) (RH ONLY) (V70255) (SEE FIG. 5 FOR DETAILS)	004004	RF	
- 26	XW21181-18	. MOTOR ASSY-CONVERTER (SAME AS BAC SPEC DWG 10-61329-16) (RH ONLY) (V70255) (OPT TO XW21181-12, -16 (V70255)) (SEE FIG. 5 FOR DETAILS)	001001	RF	
- 27	10-61329-16	. MOTOR ASSY-CONVERTER (SAME AS XW21181-16 AND -17 (V70255)) (RH ONLY) (DELETED BY SL 30-2)	002002	1	
- 27	10-61329-12	REPLS 10-61329-12 RPL BY 10-61329-2 RPL BY 10-61329-22 (RH ONLY) (V70255)	002002	1	
- 27	XW21181-16	. MOTOR ASSY-CONVERTER (SAME AS BAC SPEC DWG 10-61329-16) (RH ONLY) (V70255) (OPT TO XW21181-12, -18 (V70255)) (SEE FIG. 5 FOR DETAILS)	002002	RF	
- 27	XW21181-12	. MOTOR ASSY-CONVERTER (SAME AS BAC SPEC DWG 10-61329-12) (RH ONLY) (V70255) (OPT TO XW21181-16, -18 (V70255)) (SEE FIG. 5 FOR DETAILS)	002002	RF	
- 27	XW21181-11	. MOTOR ASSY-CONVERTER (SAME AS BAC SPEC DWG 10-61329-11) (LH ONLY) (V70255) (OPT TO XW21181-15, -17 (V70255)) (DELETED BY SL 30-2) (SEE FIG. 5 FOR DETAILS)	002002	RF	

ITEM NOT ILLUSTRATED

30-40-00-01

DETAILED PARTS LIST
HCA

30-40-0
FIG 1

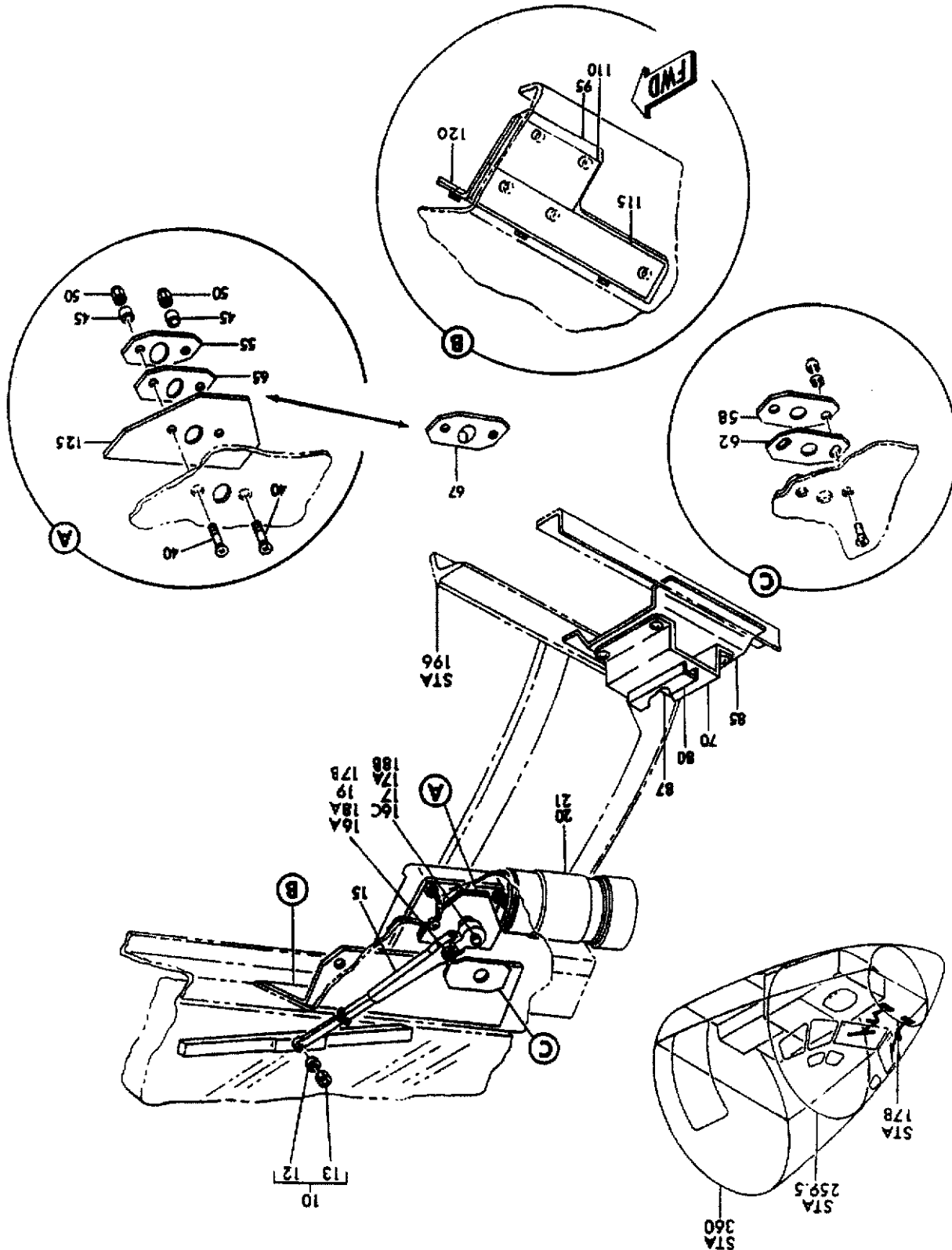
30-40-00-01

30-40-00
FIG 1
PART 2

DETAILED PARTS LIST
JUN 15/07

WIPER INSTL-WSHLD (LH)
FIGURE 1

Q 30400001 SH1 1 REV 288



PARTS CATALOG (MAINTENANCE)

727

BOEING