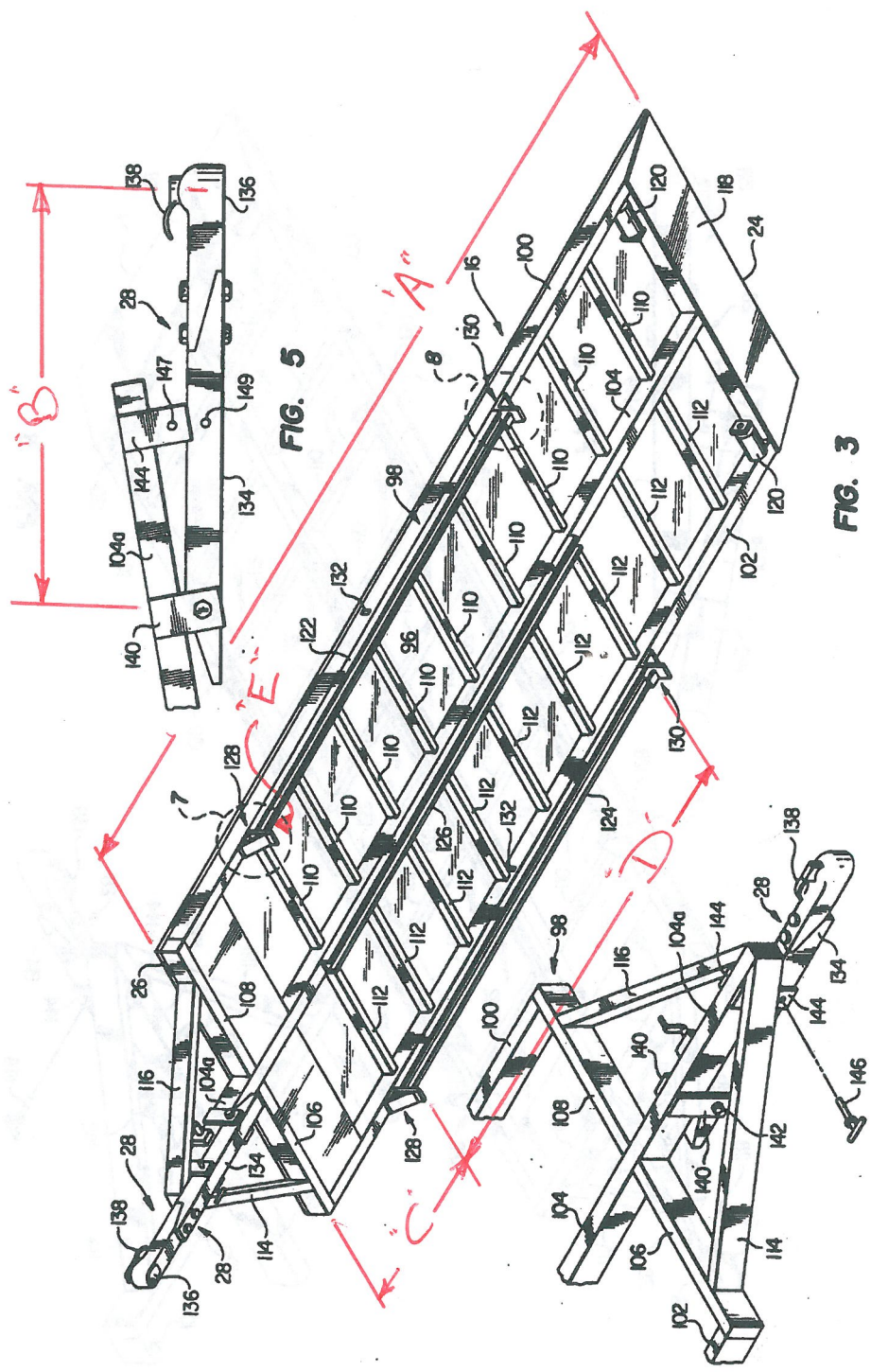


downwardly into engagement with or into close adjacency with the ground. The cargo is then moved upwardly and forwardly along the now ramped bed structure and is suitably secured thereto

Next, abutment causing longitudinal. Finally, structure. BRIEF. For a may n. FIG. 1. operat. FIG. 2. one w. FIG. 3. FIG. 4. remov. FIG. 5. <. FIGS. suppo. FIG. 7. purpos. FIG. 8. purpos. FIGS. operat. DETA. Persp. invent. 14, a suppo. under. the gr. the be. hitch b.



Referring now to FIG. 2, the elevated frame 18 of the wheeled undercarriage 20 includes two elongated outer side