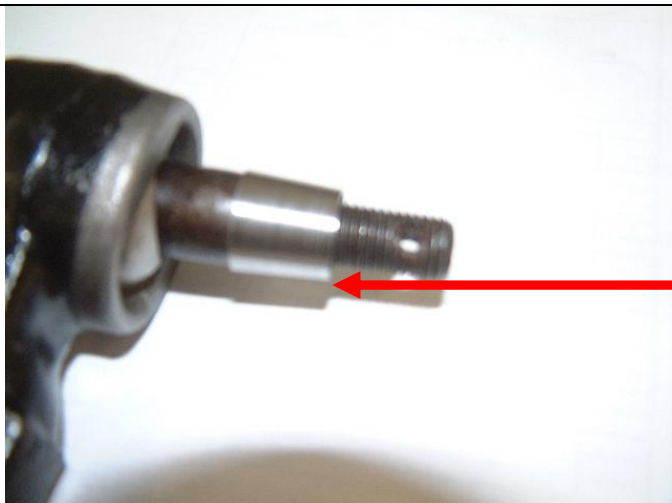
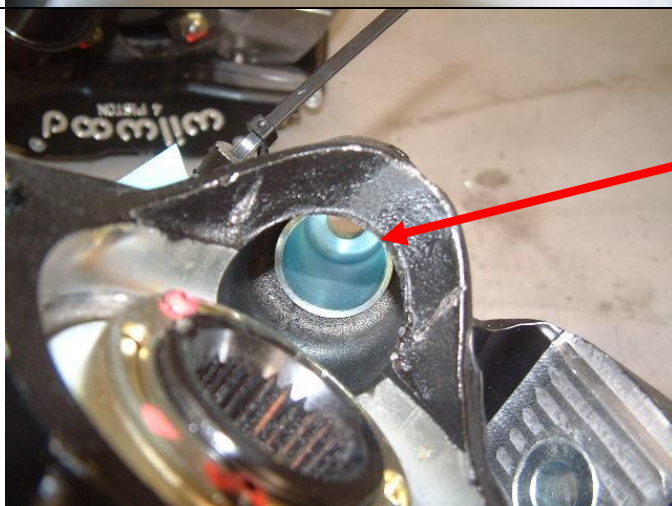


FRONT UPRIGHT TIE-ROD END CHANGE

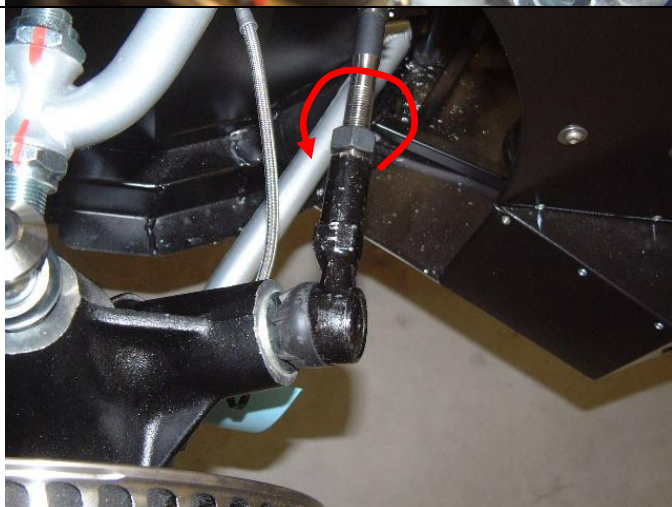


THE SUPPLIED TIE-ROD END SHOULD HAVE THE INSERT PLACED ON THE SHAFT AS SHOWN



THE NUT THAT SECURES THE TIE-ROD END TO THE UPRIGHT WILL BE VISIBLE HERE.

TO REPLACE THE CURRENT TIE-ROD END WITH THE REPLACEMENT, REMOVE THE NYLOC NUT WITH A 17mm SOCKET, EXTENSION AND WRENCH.



ONCE THE NUT IS REMOVED, REMOVE THE SHAFT OF THE TIE-ROD END OUT THE UPRIGHT. THEN REMOVE THE TIE-ROD END FROM THE STEERING RACK BY TURNING IT ANTI-CLOCKWISE.

BEFORE FITMENT OF THE NEW TIE-ROD END THE TIE-ROD SHOULD BE SHORTENED BY 15mm.

REVERSE THE PREVIOUS TWO STEPS FOR INSTALLING THE NEW TIE ROD ENDS.