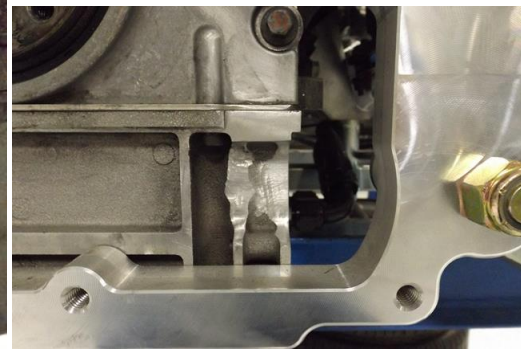
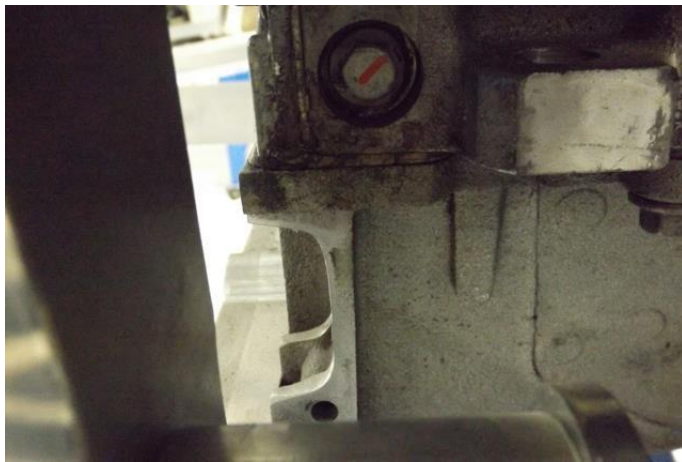
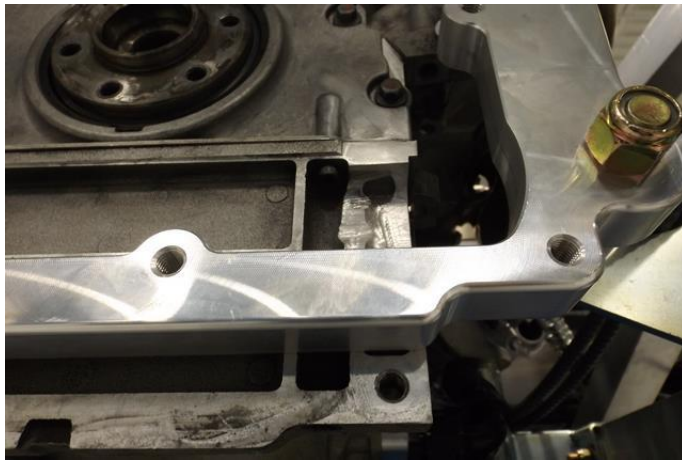


Graziano transaxle

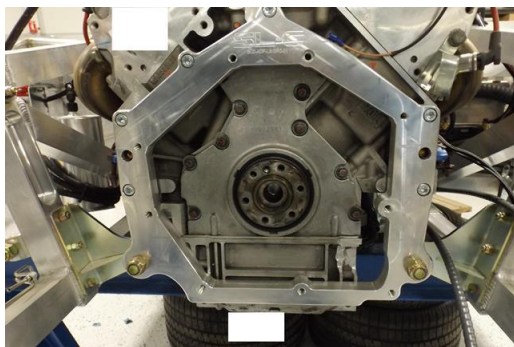


Chevrolet oil pan material removal and bolt swap.

The right side of the Chevrolet sump oil pan requires a small amount of material be removed to allow the Graziano transaxle AWD shaft clearance. This minor modification also requires the removal and replacement of the long bolt into the oil pan with a smaller bolt to allow clearance.



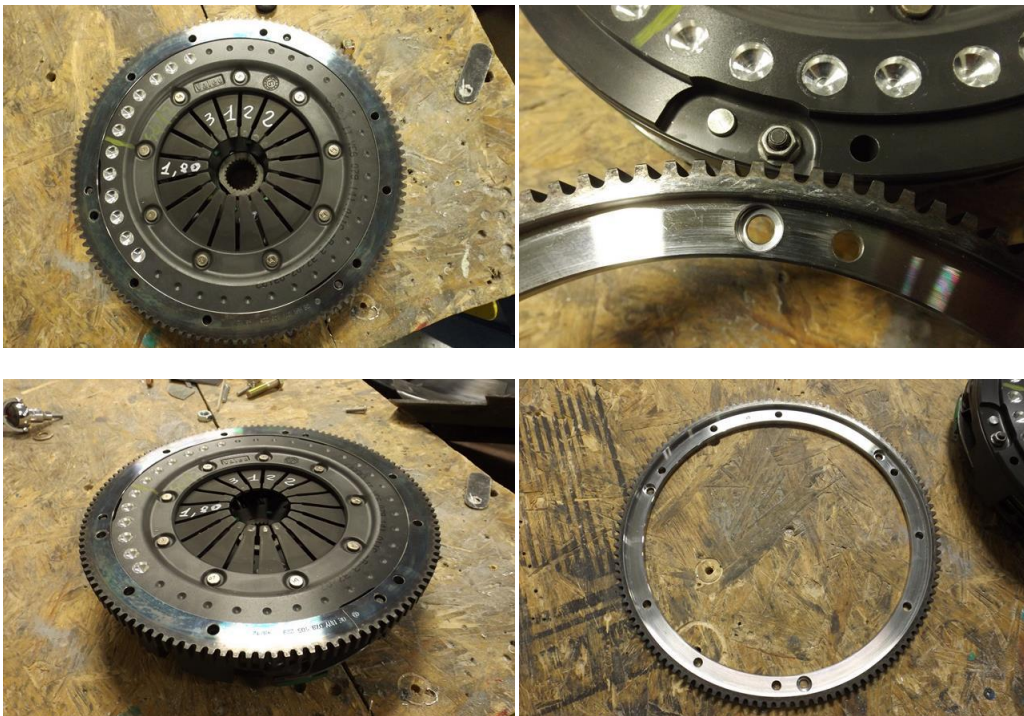
Graziano adapter plate installed on rear of Chevrolet block



Custom flywheel manufactured by Superlitecars

Graziano specific pilot/input bearing needs to be installed into the flywheel ...NOT the engine

Crankshaft



Note indent on ring gear and clutch pressure late during installation

Flywheel installed

Cable shift bracket installed ontop of transaxle



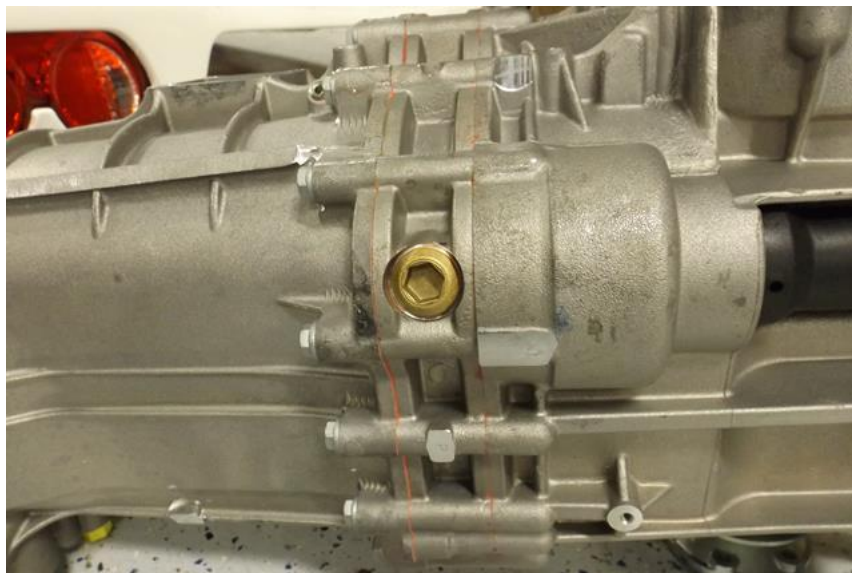


Side mount brackets installed with hole facing forward

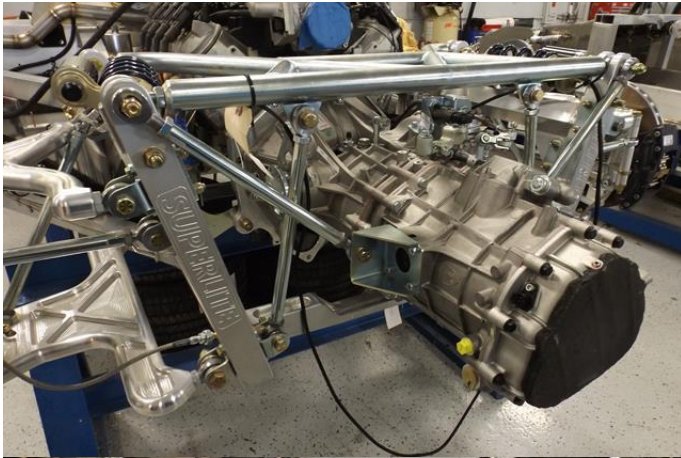
Yellow plug shows location of clutch line location on inderside of the transaxle... install a 12mm x 1.5 to -3an 90 degree male fitting



Oil drain plug in bottom of transaxle



Rear support rods installed



Sensors and plugs....

