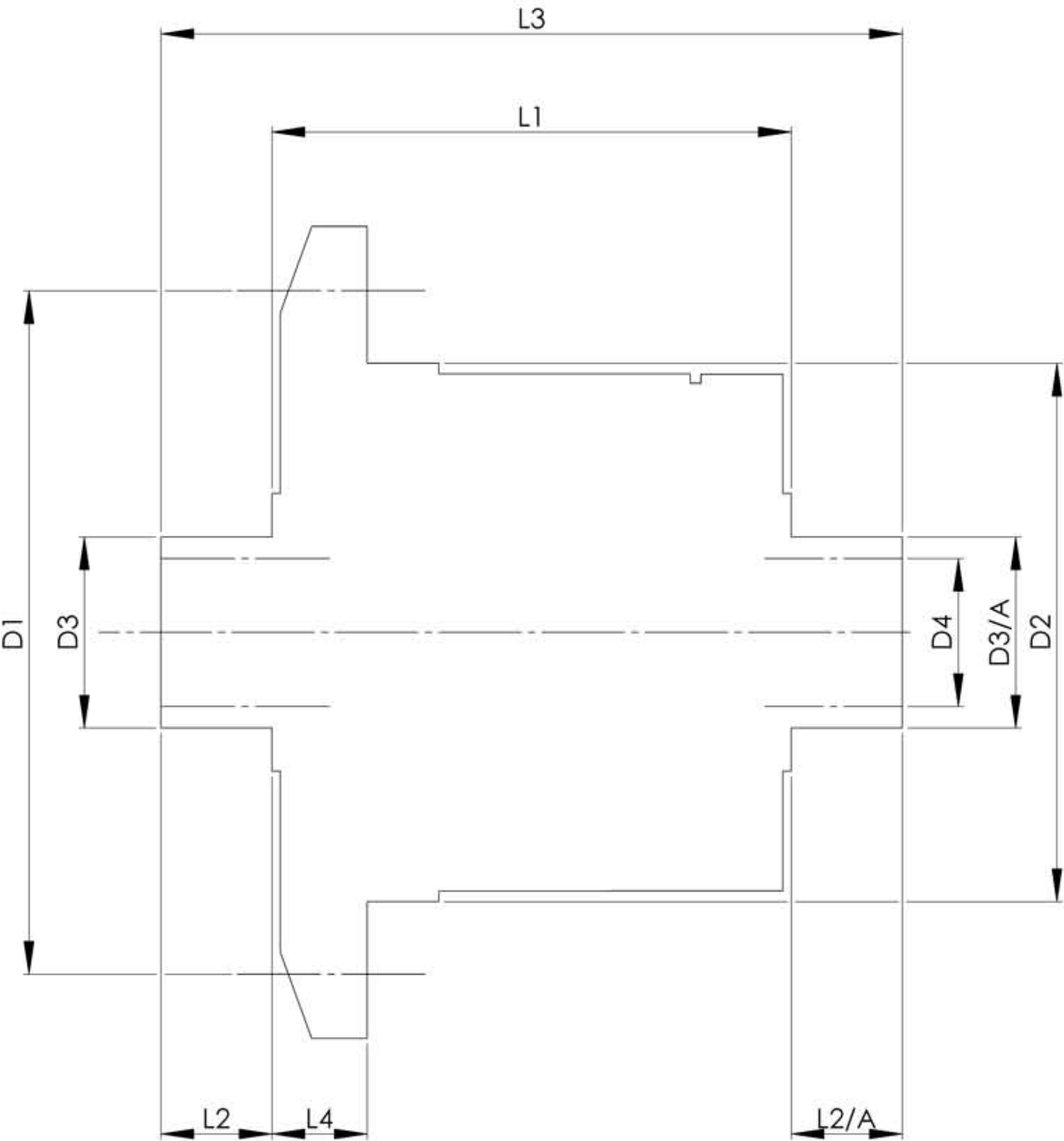


| | | | |
|------------------------|------|-------------|----------|
| | | INCH | MM |
| CROWN WHEEL BOLT PCD | D1 | 5.276 | 134 |
| No. OF BOLTS | | 10 | 10 |
| THREAD / THRO' HOLE | | 0.413 | 10.5 |
| CROWN WHEEL SPIGOT DIA | D2 | 4.5288 | 115 |
| BEARING DIA | D3 | 1.626 | 41.3 |
| | D3/A | 1.6142 | 41 |
| BEARING DISTANCE | L1 | 4.245 | 18 |
| SPIGOT LENGTH | L2 | 1.305 | 33.1 |
| | L2/A | 1.780 | 45.2 |
| OVERALL LENGTH | L3 | 7.330 | 186.2 |
| BEARING/CROWN WHEEL | L4 | 0.453 | 11.5 |
| BORE | D4 | 1.202 | 30.5 |
| | | | |
| | | | |
| DRIVE SHAFT SPLINE:- | | | |
| No. OF TEETH | | 37 | |
| PITCH | | 32/64 DP | |
| TYPE | | FILLET ROOT | SIDE FIT |
| PRESSURE ANGLE | | 30 DEG | |
| | | | |



| |
|-------------------------------|
| TITLE R.W.D. DIFF DATA SHEET. |
| SCALE 1:1 U.O.S. SHEET 1 OF 1 |
| Drg. No. QDF4Q |

Quaife Design & Development.

IF IN DOUBT, ASK.

| | |
|------------------------------|-------------|
| FINISH. MACH, | GRIND@G |
| LIMITS. FRACT. $\pm 1/64"$. | |
| DEC. $\pm 0.005"$. | |
| MATERIAL. | |
| TREATMENT. | |
| ISSUE. 01 DATE. 16.5.05 | |
| DRAWN BY. M.L.M. | |
| Used In. | PORSCHE 944 |