



SUPERFORMANCE MKII Street / MKII FIA / Tribute WIPER ARM PARK POSITION REVERSAL

This bulletin will describe the procedure to reverse the windshield wiper 'park' position to rest on the passenger side of the vehicle, versus the driver's side, as delivered from the Factory. The original Cobras had windshield wipers that rested in park on the passenger's side, as most left hand vehicles do. This modification will require replacement of original wiper arms with new custom arms. Please read this bulletin completely before beginning any work, and gather the appropriate parts and tools before you start.

This Service Bulletin is applicable to the following chassis.

SUPERFORMANCE MKII - Slabside - FIA - Tribute chassis.

* SUPERFORMANCE MKIII - All chassis.

** Procedure is similar. Wiper motor is mounted in different location and orientation*

PROCEDURE

- 1) Make sure the vehicle has a cold engine.
- 2) Disconnect the vehicle's battery for safety.
- 3) Disconnect the operation cable from the fresh air regulator (if so equipped. if not, skip to Step 6). Loosen the cable housing retaining clamp, and cable wire anchor screw. Pull cable housing clear of regulator.



- 4) Remove the fresh air regulator from the foot box. The regulator is retained by three sheet metal screws around its circumference. It is not necessary to remove the regulator from the flex hose.



- 5) Wrap the fresh air regulator in a clean rag to prevent scratching, and position it out of the way of your work space, alongside the engine header.

6) Reach behind the wiper motor, and feel for the electrical cable that powers the motor. It may have fallen between the foot box and interior body surface. Disconnect cable by squeezing tabs on each side, and separate the connectors.



7) Loosen the brass ferrule nut on the cable tube where it joins the wiper motor body. Three to four turns should suffice.

8) Inside the driver's side foot box are two 10mm nuts that hold the wiper motor to the top of the foot box. Remove them, while an assistant holds the bolt heads topside with a 10mm box end wrench.



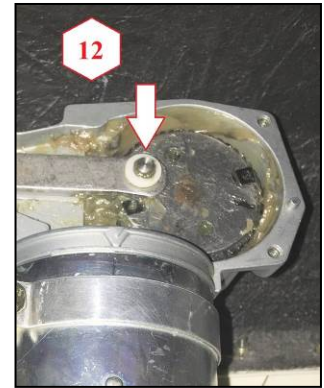
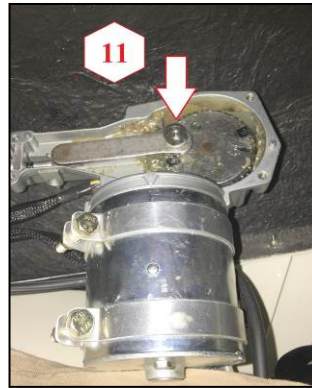
9) You can now lift up the wiper motor, and place a rag underneath it to prevent scratching the foot box.

10) Rotate the wiper motor 90 degrees, so the top cover is now facing you. Remove the four top cover screws, and cover.



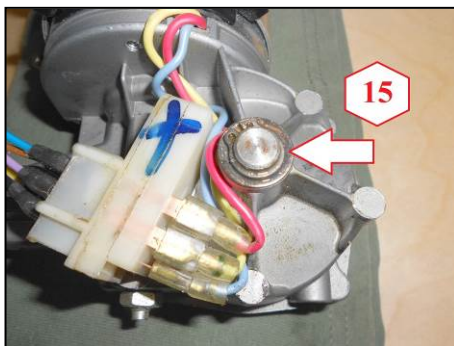
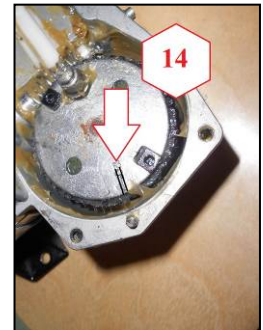
11) Remove the circlip and washer from the gear wheel drive pin.

12) Gently, and evenly pry up the connecting rod, from both ends.



13) Remove the flexible wiper drive by lifting it straight out from the wiper motor body. You can now remove the wiper motor from the vehicle, and place on a proper work bench.

14) Wipe any grease away from the gear wheel, so you can make two index marks with a felt pen, etc. Make marks on the wiper body and gearwheel opposite of each other. This is important, as the gear wheel must be re-installed in the exact same place to enable reassembly.



15) Turn the wiper motor over, and locate the end of the gear wheel shaft. Remove the circlip and washer

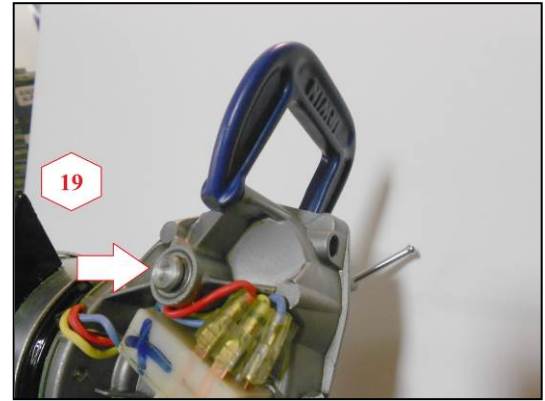
16) Using a plastic mallet, lightly tap the end of the gear wheel shaft. This will allow the gear wheel to rise up, and be removed from the gear box.

17) Place gear wheel on work surface, shaft facing up. Note the white plastic limit switch trigger. Carefully and evenly, pry it up and reinstall it 180 degrees back into the gear wheel. Press it into the gearwheel until fully seated with your fingers.



18) Reinstall gear wheel back into the wiper motor body, using your index marks to ensure the gear wheel is in the exact same position in which it was removed.

19) Place wiper motor in a vise, using a rubber mat to prevent damage. Use a 3" C-clamp, and gently press the gear wheel in until bottomed out in the wiper body. This will give you enough clearance to reinstall the gear wheel shaft washer and circlip. Remove C-clamp.

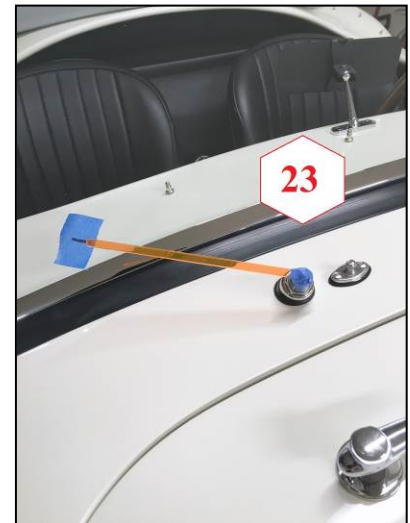


20) Position the wiper motor back in the vehicle, and reverse Steps 13 through 3 for reassembly

21) Prior to connecting the vehicle battery, remove the wiper arms. This is accomplished by lifting the wiper blade away from the windscreen as far as it can go. Pull the wiper arm straight away from the drive spindle until released.

22) The next step will allow you to check your work without the possibility of damage to the vehicle bodywork, should the wiper arms be out of proper index.

23) Connect the vehicle battery and turn the Wiper switch on to reset the new park position. To check the correct park position and operation of the wiper arms, use masking tape and anchor a soda straw, drink stirrer, etc. to each drive spindle. Position the new 'pointers' pointing to corresponding pieces of tape on the windshield, on the passenger side of the vehicle. Turn the Wiper on the slow position, and note the motion when the Wiper switch is turned off. It should return and park to where your 'pointers' indicated initially.

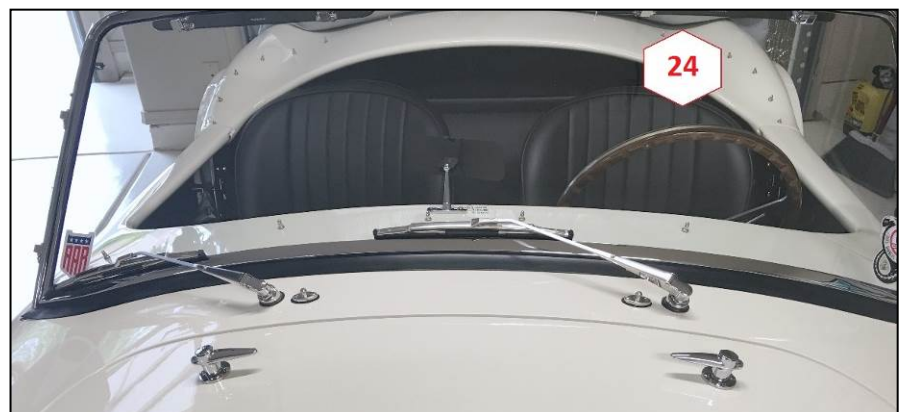


HINT:

Original Wiper Blades:

TEX England- Part #B05110 (10"long) 5.2mm Bayonet Type.

24) When Step 23 is successful, you can now install the new wiper arms and original blades.



Replacement Custom Wiper Arms – Part Number M2-17524-RHK:

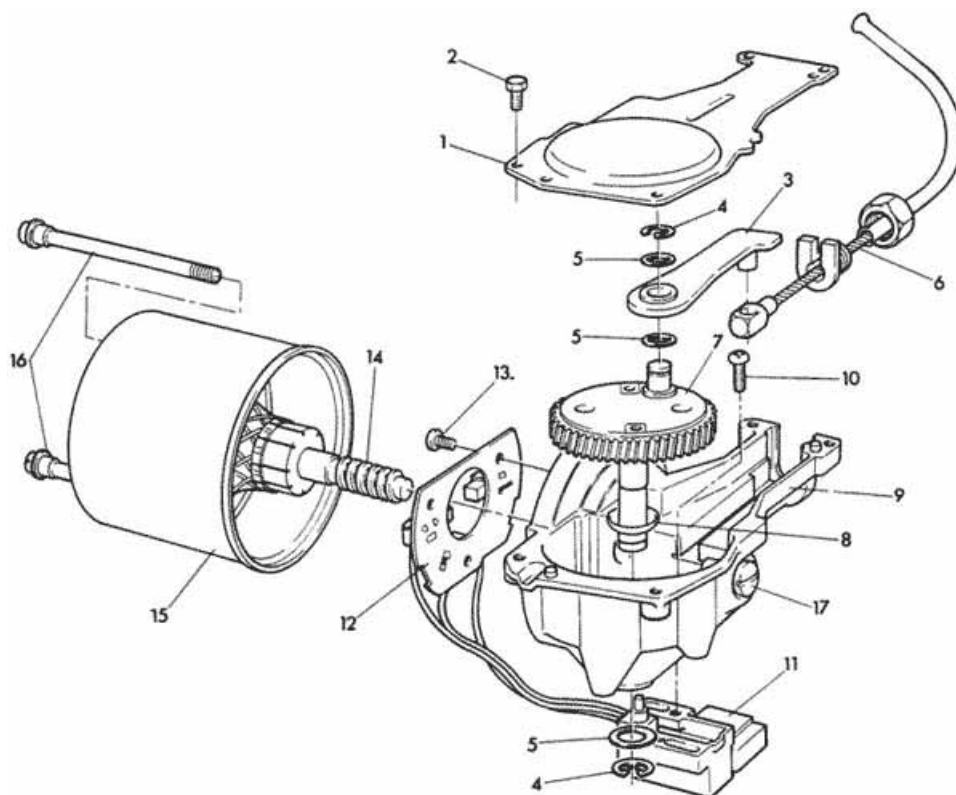
Contact: Time Machines Motorsports
9820A Keller Road
PO Box 492
Clarence Center, NY 14032

Pricing/Pair: \$49.00 USD + \$12.50 USD Shipping
(Overseas Shipping enquire)

Phone: 716-407-0975

Email: info@timemachinesauto.com

1. Gearbox cover
2. Screw for cover
3. Connecting Rod
4. Circlip
5. Washers
6. Flexible wiper drive
7. Gear wheel with crankpin
8. Dished washer
9. Gearbox
10. Limit switch screw
11. Limit switch
12. Brush gear
13. Screw for brushes
14. Armature
15. Yoke
16. Bolts
17. Thrust screw



WIPER MOTOR EXPLODED DRAWING

This is a Superformance authorized Service Bulletin.

We cannot control the results of the shown modification or adjustments and therefore cannot be held liable for the results.

By you implementing this modification or adjustment you solely take full responsibility for the outcome.

This Information has been assembled from Superformance Dealers and/or Owner experience.

Comments, Corrections or Suggestions: SPFWiringDiagrams@Comcast.net

Contributors: Blas Costagli, Ross Henry and Jeff Cahill.

Rev 0