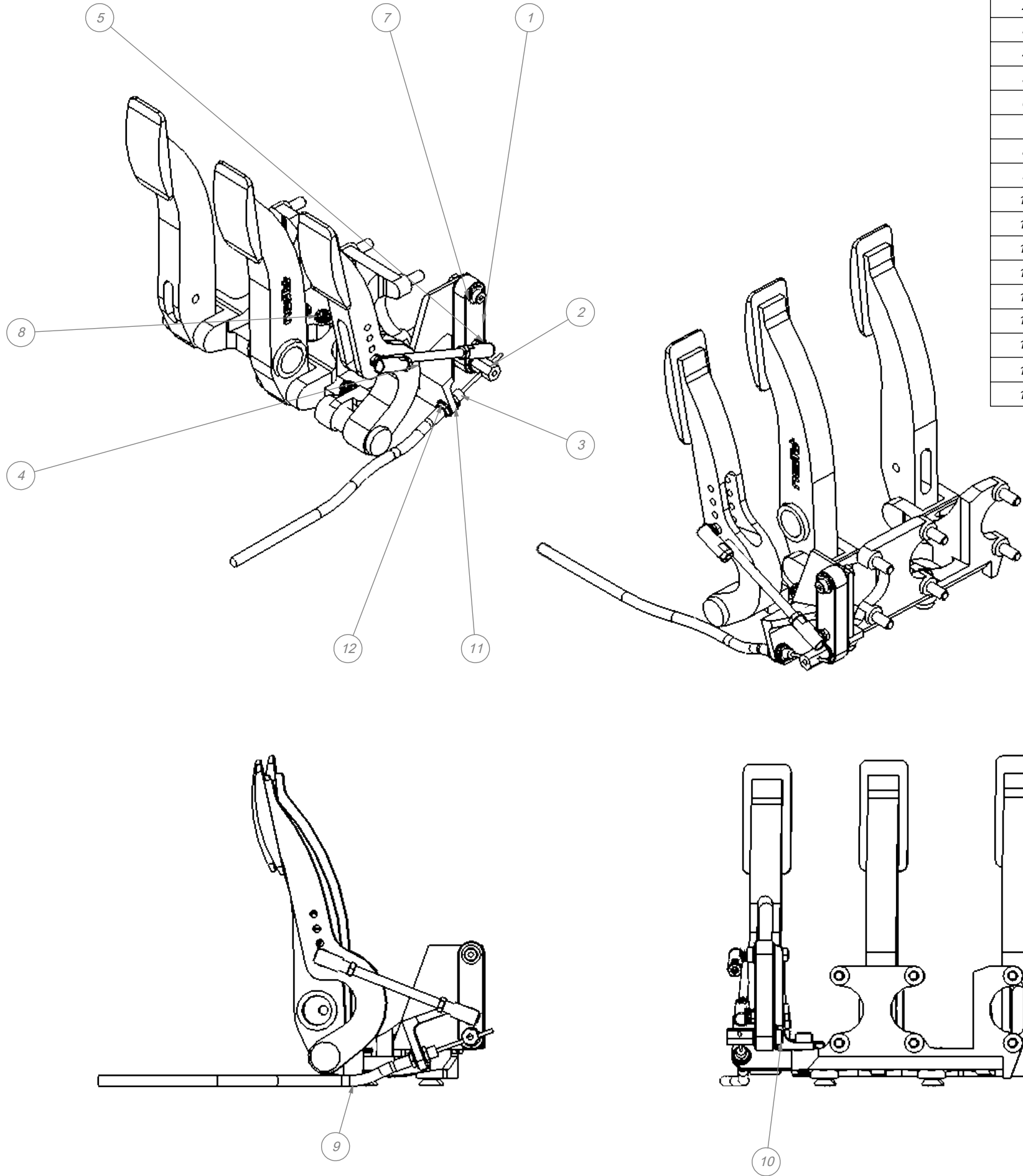


Drawing File Name: PEDAL LINKAGE



ITEM NO.	QTY	PART NUMBER	DESCRIPTION	VENDOR	MANUFACTURER
1	1	linkage	LINKAGE ARM	KHM	
2	1	throttle cable end	CABLE END	KHM	
3	1	1270-BASIC7	CUSTOM THROTTLE CABLE	PEGASUS RACING	
4	1	72-603	PEDAL ASSEMBLY	RACE CAR REPLICAS	TILTON
5	2	6058K25	1/4-28 ROD END	McMASTER CARR	
6	2	9368T115	BUSHING	McMASTER CARR	
7	4	5906K563	THRUST BEARING	McMASTER CARR	
8	4	92066A030	SOCKET NUT	McMASTER CARR	
9	4	92210A583	FHCS	McMASTER CARR	
10	2	_SHSS_ 0.313 x 0.750	FASTENER	FASTENAL	FASTENAL
11	2	_FLAT WASHER_ 0.313	FASTENER	FASTENAL	
12	2	_HEX JAM NUT_ 0.313-24	FASTENER	FASTENAL	FASTENAL
13	4	_SHCS_ 8-32 x 0.50 #23114	FASTENER	STOCK	FASTENAL
14	2	_SHCS_ 0.313-18 x 0.75 #23253	FASTENER	STOCK	FASTENAL
15	1	angle bracket2	ANGLE IRON		
16	1	angle bracket3	ANGLE IRON		
17	3	_HEX JAM NUT_ 0.250-20 #36202	FASTENER	FASTENAL	FASTENAL
18	1	THREADED ROD .25-20			

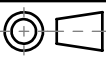
REV	BY	DATE	DESCRIPTION	APP BY	APP DATE
+	+	07-17-2015			



KURT HOFFMAN MOTORSPORTS

1337 N. CORNELL LANE
WAUSEON, OH 43567

DESIGNED BY: *KJH*
DETAILED BY: *KJH*
CHECKED BY:
DETAILED ON: 03-16-2020

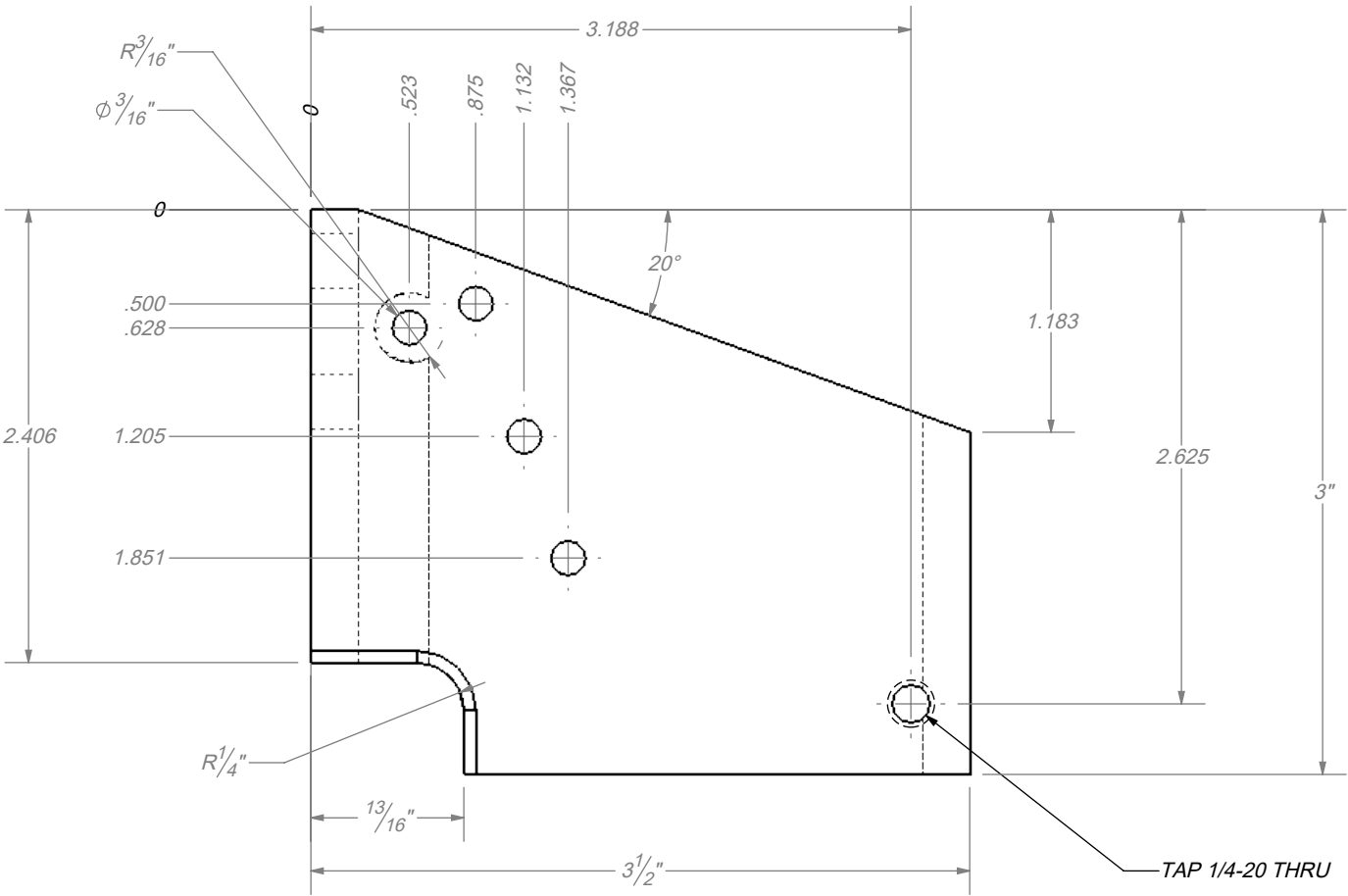
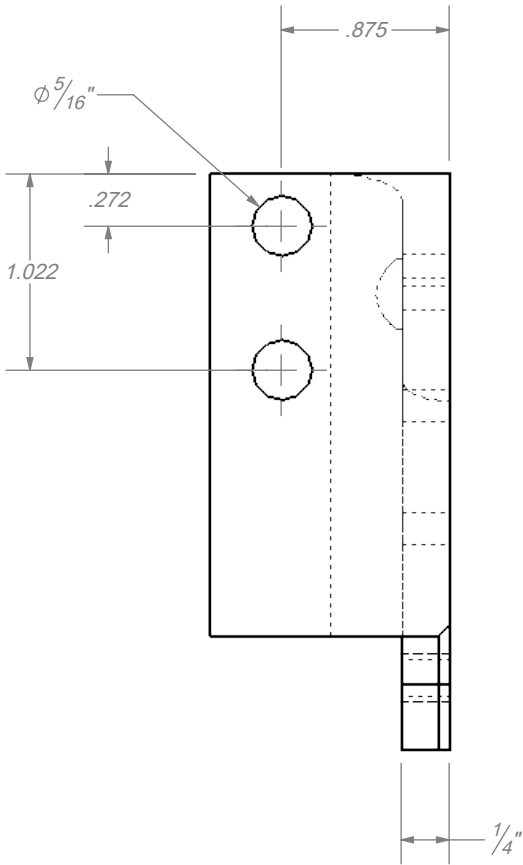
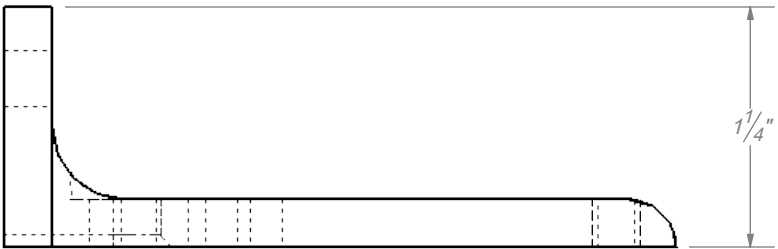

TOLERANCES UNLESS OTHERWISE SPECIFIED
ANGULAR = XX ± 1°
FRACTIONAL = 1/XX ± 1/32"
2 PL DEC = X.XX ± .010"
3 PL DEC = X.XXX ± .005"
4 PL DEC = X.XXXX ± .001"
BREAK ALL EDGES .02 MAX


SL-C PEDAL LINKAGE ASSEMBLY
MATERIAL:
STOCK SIZE:
HEAT TREAT:
REF. OF:
FINISH:

SCALE: 1:4
SHEET: 1 OF 1
SIZE: B
REVISION: +
PART NUMBER:
PEDAL LINKAGE

±.001 TO DOWELS
±.005 TO ALL OTHER FEATURES

REV	BY	DATE	DESCRIPTION	APP BY	APP DATE
+	+	07-17-2015			





KURT HOFFMAN MOTORSPORTS

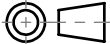
1337 N. CORNELL LANE
WAUSEON, OH 43567

DESIGNED BY: *KJH*

DETAILED BY: *KJH*

CHECKED BY:

DETAILED ON: *03-16-2020*



TOLERANCES UNLESS OTHERWISE SPECIFIED
ANGULAR = XX ± 1°
FRACTIONAL = 1/XX ± 1/32"
2 PL DEC = X.XX ± .010"
3 PL DEC = X.XXX ± .005"
4 PL DEC = X.XXXX ± .001"
BREAK ALL EDGES .02 MAX

REF. OF:

ANGLE BRACKET
PEDAL LINKAGE

MATERIAL:

STOCK SIZE:

HEAT TREAT:

FINISH:

SCALE:
1:1

SHEET:
1 OF 1

SIZE:
B

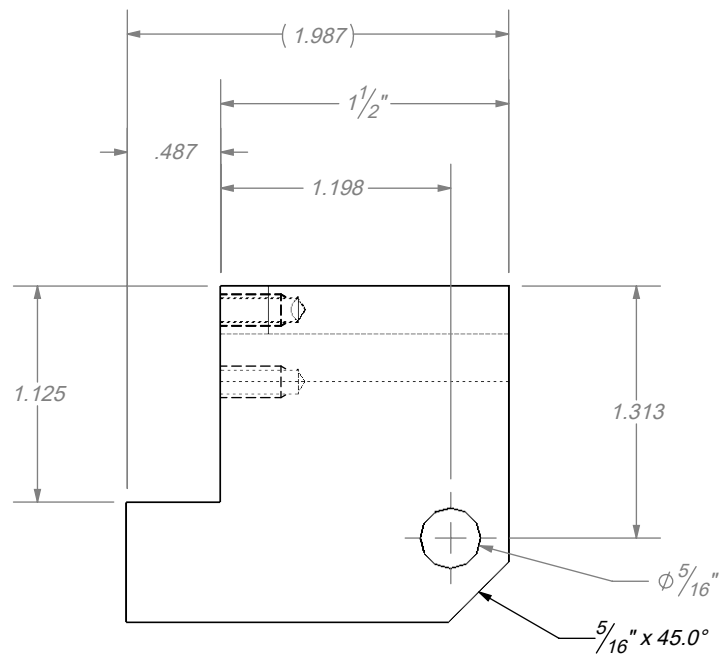
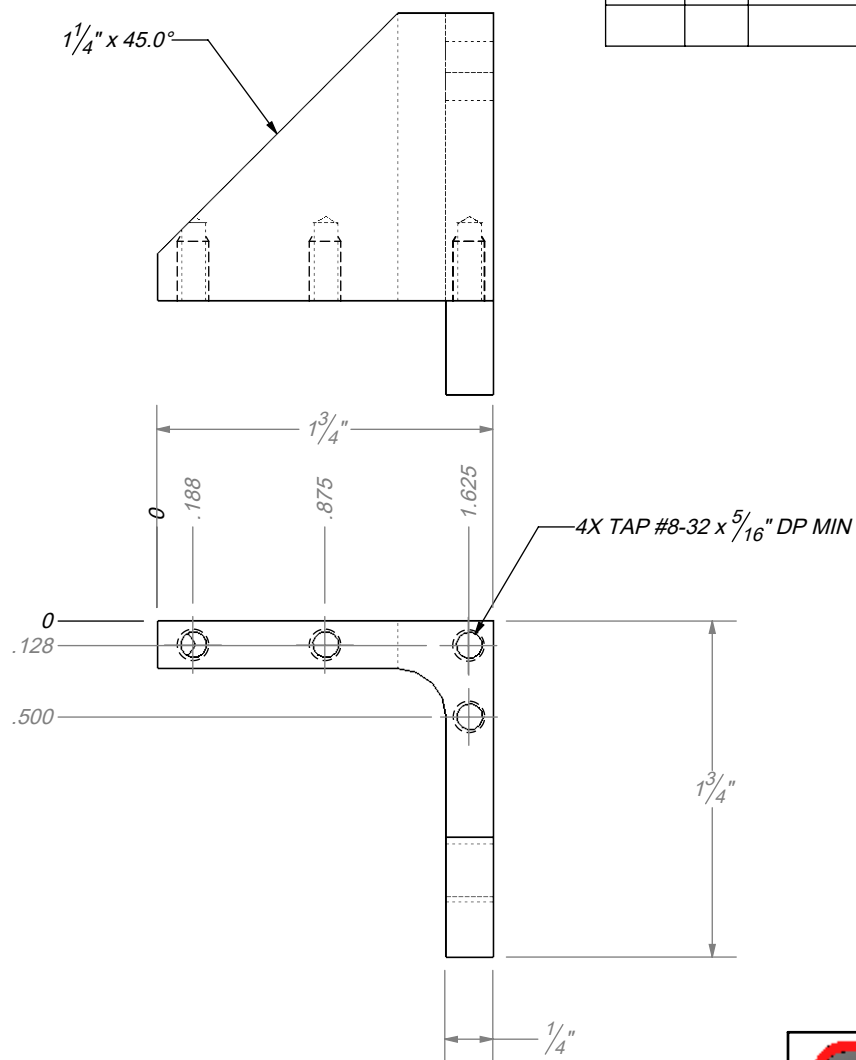
REVISION:
+

PART NUMBER:
angle bracket2



±.001 TO DOWELS
±.005 TO ALL OTHER FEATURES

REV	BY	DATE	DESCRIPTION	APP BY	APP DATE
+	+	07-17-2015			



THIS DRAWING OR PRINT A) IS THE PROPERTY OF WAUSEON MACHINE & MANUFACTURING AND CONTAINS PROPRIETARY AND CONFIDENTIAL INFORMATION BELONGING TO W.M.M. B) IS MADE AVAILABLE TO THE RECIPIENT ON THE EXPRESS AND SPECIFIC CONDITION THAT NEITHER IT NOR THE INFORMATION CONTAINED THEREON OR DISCLOSED THEREIN SHALL BE DISCLOSED OR MADE AVAILABLE TO OTHERS WITHOUT THE EXPRESS AND SPECIFIC WRITTEN CONSENT OF W.M.M. AND THAT SUCH INFORMATION SHALL BE USED ONLY AS EXPRESSED AND SPECIFICALLY APPROVED IN WRITING BY W.M.M. AND NOT OTHERWISE. C) SHALL NOT BE DUPLICATED IN ANY MANNER OR TO ANY EXTENT WITHOUT THE EXPRESS AND SPECIFIC WRITTEN CONSENT OF W.M.M. D) SHALL BE RETURNED BY THE RECIPIENT THEREOF TO W.M.M. AT THE LATTER'S REQUEST PROMPTLY AFTER SUCH REQUEST IS MADE.



KURT HOFFMAN MOTORSPORTS

1337 N. CORNELL LANE
WAUSEON, OH 43567

DESIGNED BY: *KJH*

DETAILED BY: *KJH*

CHECKED BY:

DETAILED ON: 8/16/21

SCALE:
1:1

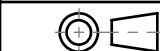
SHEET:
1 OF 1

SIZE:
A

REVISION:
+

PART NUMBER:

angle bracket3



TOLERANCES UNLESS OTHERWISE SPECIFIED
ANGULAR = XX ± 1°
FRACTIONAL = 1/XX ± 1/32"
2 PL DEC = X.XX ± .010"
3 PL DEC = X.XXX ± .005"
4 PL DEC = X.XXXX ± .001"
BREAK ALL EDGES .02 MAX

REF. OF:

MATERIAL:

STOCK SIZE:

HEAT TREAT:

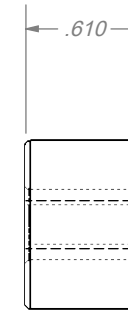
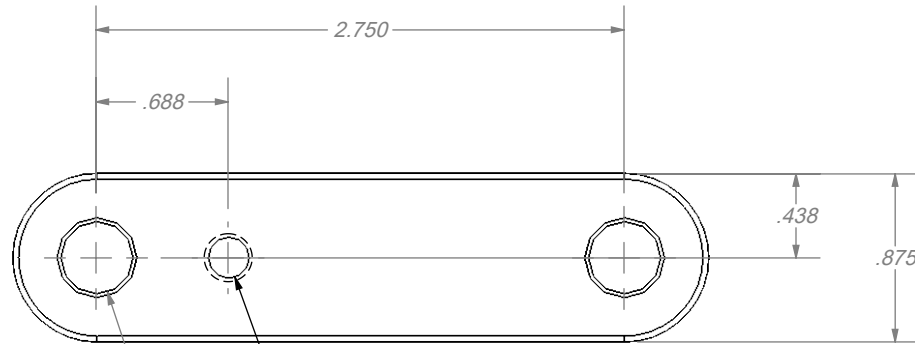
FINISH:

ANGLE BRACKET PEDAL LINKAGE



±.001 TO DOWELS
±.005 TO ALL OTHER FEATURES

REV	BY	DATE	DESCRIPTION	APP BY	APP DATE
+	+	07-17-2015			



R.03
TYP

TAP 1/4-28 THRU

REAM PF THRU FOR
 $\phi \frac{3}{8}$ " DWL, 2 PLCS

THIS DRAWING OR PRINT A) IS THE PROPERTY OF WAUSEON MACHINE & MANUFACTURING AND CONTAINS PROPRIETARY AND CONFIDENTIAL INFORMATION BELONGING TO W.M.M. B) IS MADE AVAILABLE TO THE RECIPIENT ON THE EXPRESS AND SPECIFIC CONDITION THAT NEITHER IT NOR THE INFORMATION CONTAINED THEREON OR DISCLOSED THEREIN SHALL BE DISCLOSED OR MADE AVAILABLE TO OTHERS WITHOUT THE EXPRESSLY AND SPECIFICALLY WRITTEN CONSENT OF W.M.M. AND THAT SUCH INFORMATION SHALL BE USED ONLY AS APPROVED IN WRITING BY W.M.M. AND NOT OTHERWISE. C) SHALL NOT BE DUPLICATED IN ANY MANNER OR TO ANY EXTENT WITHOUT W.M.M.'S PRIOR AND SPECIFIC WRITTEN CONSENT. D) SHALL BE RETURNED BY THE RECIPIENT THEREOF TO W.M.M. AT THE LATTER'S REQUEST PROMPTLY AFTER SUCH REQUEST IS MADE.



KURT HOFFMAN MOTORSPORTS

1337 N. CORNELL LANE
WAUSEON, OH 43567

DESIGNED BY: *KJH*
DETAILED BY: *KJH*
CHECKED BY:
DETAILED ON: 07-17-2015



LINKAGE ARM

TOLERANCES UNLESS OTHERWISE SPECIFIED
ANGULAR = XX ± 1°
FRACTIONAL = 1/XX ± 1/32"
2 PL DEC = X.XX ± .010"
3 PL DEC = X.XXX ± .005"
4 PL DEC = X.XXXX ± .001"
BREAK ALL EDGES .02 MAX

MATERIAL: *ALUMINUM*

STOCK SIZE:

HEAT TREAT:

REF. OF:

FINISH:

SCALE: 1:1
SHEET: 1 OF 1

SIZE: **A**
REVISION: **+**

PART NUMBER:
linkage